



**SYLVIA DUBOIS CHAPEL
& CAMPUS MINISTRY CENTER**





Table of Contents

- 1 **Welcome from Principal Dan Quesnell**
- 2 **Leading to The Chapel**
- Mother of Our Savior Chapel**
- 4 The Entrance
- 6 The Sanctuary
- 10 The Nave
- 12 The Four Main Windows
- 14 The Walls
- Campus Ministry Center**
- 16 From the Director of Campus Ministry
- 18 Prayer & Worship
- 19 Service
- 20 Retreats
- 21 Campus Ministry Council

WITH GRATITUDE TO:

THE CHAPEL DESIGN TEAM

ELLEN BARTEL
President

KATHLEEN CULLEN, DSHA '05
Director of Campus Ministry

SYLVIA DUBOIS, HA '46†

S. MARY LEE GRADY, SDS, DS '58

CATHERINE LENNON
*Campus Minister for Liturgy & Prayer/
Theology Faculty*

STEPHANIE MONSON
Director of Salvatorian Service

JILL PITTERLE, DSHA '72
Visual Arts Faculty

DAN QUESNELL
Principal

KATIE WISNIEWSKI, DSHA '15

MARY WISNIEWSKI, DSHA '85

JOSEPH WITTMANN
Liturgical Design Consultant

– AND –

INSPIRED ARTISANS
SARAH HALL STUDIO INC.
SPOLAR STUDIOS
T. H. STEMPER CO.

For more information, visit dsha.info/faithformation.

Welcome from Chairman of Chapel Design Team, Principal Dan Quesnell

“

The mission of Divine Savior Holy Angels High School is the filter through which all student experiences occur. Our mission states that *DSHA is a Catholic college preparatory high school for young women that excels at developing the whole person*. When we have an opportunity to paint a verbal picture of the DSHA experience, Catholic always precedes college-preparatory. Our identity is not rooted in rigorous coursework; rather, it is grounded in the mission of sponsoring order, the Sisters of the Divine Savior, *to make known the goodness and kindness of Jesus Christ*.

In accordance with our mission, the young women of DSHA develop into *capable young women of faith, heart and intellect who accept the gospel call to live lives that will make a difference*. Through four years of purposeful faith formation experience and opportunity, students grow in their own relationships with God, and learn to be the hands and feet of Jesus as they engage in service throughout Milwaukee and beyond.

As principal, one of the highlights of my week is attending weekly optional liturgy in the Mother of Our Savior Chapel with students, faculty and staff. This consistent expression of our belief in a loving God and a living Christ, is a beautiful opportunity to live out our Catholic faith – in community with one another – as we take part in the shared experience of receiving the Eucharist and coming together through prayer and worship.

The chapel, along with the Campus Ministry Center, are both the literal and figurative heart of our school. Not only is it near the direct center of the building, it is also the life-force behind the whole-person development of each and every girl at DSHA. In this space, girls change. They are challenged to serve the poor and vulnerable, they plan retreats, and share their experiences. They lift each other up through special intentions, and they pray the rosary together. They join voices in worship and hands in prayer. They develop into young women who will graduate with a heart equipped to love Jesus, serve God, and listen to the Holy Spirit.

You will read in this book, each piece of the space has a deliberate design – it is a sanctuary to enhance our communion with God and each other. We are grateful for the Sylvia Dubois Chapel & Campus Ministry Center; with the Mother of Our Savior Chapel having been dedicated on September 11, 2015. It is a sacred and holy space. It is changing lives and developing hearts.

”

Leading to The Chapel

The Mother of Our Savior Chapel is a sacred space dedicated to the patronage of the first disciple of Christ, our mother Mary, Mother of our Savior. The salvation of our world is centered in Christ, but not without Mary – the first disciple to say “yes” and to bear the Savior with all her joys and sorrows.

Faith is the heart of DSHA; similarly, the chapel is placed in the heart of the building. The orientation of the chapel is directed toward The Quad and main entrance of the school. It has a strong visual presence and symbolic centering to all who enter DSHA.

The hallway leading to the shrine of the Mother of Our Savior depicts the words of Mary at the Visitation: *“My soul proclaims the greatness of the Lord; my spirit rejoices in God my Savior.”* (Luke 1:46-47) The Magnificat, Mary’s song of praise that echoes her Jewish roots, is represented in English, Spanish, French, Latin and Tagalog in the hall beyond the shrine of the Mother of Our Savior. These languages are chosen from each part of the world served by the Salvatorians that echoes the Gospel charism; *“And he said to them, ‘Go out to the whole world; proclaim the gospel to all creation.’”* (Mark 16:15)

Images of Father Jordan and Mother Mary, founders of the Salvatorians, are found on the wall directly across from Mary’s Song. In addition, all of the Salvatorian Sisters Service Award plaques are also hung on this wall to demonstrate the mission of our sponsoring order and the connection to our students and their Salvatorian Service Requirement. The stained glass windows removed from the old chapel have also been reworked from the Sisters of the Divine Savior chapel. They are used on the windows at the end of the second floor corridor leading to the Mother of Our Savior Chapel, signifying the special nature of this floor.



STAINED GLASS FROM FORMER CHAPEL

To view an online version of this book, visit dsha.info/chapel.



THE WORDS OF MARY AT THE VISITATION

The Mother of Our Savior Chapel ceremonial doors open to The Quad and overlook the main social gathering area of DSHA. Next to The Robert and Marie Hansen Family Fine Arts Theatre, fine arts wing, academic building, and the health & wellness center, the chapel symbolically pays tribute to the DSHA Mission Statement, which states “...we develop our students into capable young women of faith, heart and intellect who accept the Gospel call to live lives that make a difference.” The chapel under this title of Mary, the first servant of Christ, stands at the very heart of our complex as a constant reminder of our call to our mission and to live the values of the Gospel we have inherited from our founders.

The four Gospel charisms of Father Jordan, founder of the Salvatorians, serve as the inspiration for the design and arrangement of the chapel. They are:

And eternal life is this: to know you, the only true God, and Jesus Christ whom you have sent. | John 17:3

Go, therefore, make disciples of all nations; baptize them in the name of the Father and of the Son and of the Holy Spirit, and teach them to observe all the commandments I gave you. And look, I am with you always until the end of time. | Matthew 28:19-20

And he said to them, ‘Go out to the whole world; proclaim the gospel to all creation.’ | Mark 16:15

But the wise shall shine brightly like the splendor of the firmament; and those who lead the many to justice shall be like the stars forever. | Daniel 12:3

With Mary as the patron of our sacred space and the scriptural charisms of Father Jordan to inspire the design, the Mother of Our Savior Chapel is grounded in the tradition of our founding schools, Holy Angels Academy and Divine Savior High School.

MOTHER OF OUR SAVIOR CHAPEL

The Entrance

The balcony overlooking The Quad visually connects the lower social gathering space to the chapel.

The processional cross stands and overlooks the chapel and The Quad unless Mass is being held. This cross leads us to Mass, whether it is held in The Robert and Marie Hansen Family Fine Arts Theatre or chapel, and will stand here when liturgy is not being celebrated.

The ceremonial doors to the chapel are made of wood; strong and great, welcoming and simple. These doors serve as a backdrop when closed, and a frame when open, to the blessing font that stands before the entrance to the chapel.



PROCESSIONAL CROSS



CEREMONIAL DOORS

“The chapel is a beautiful, sacred space for prayer, reflection, progressive meditation and community bonding. Optional liturgy is a time I cherish and look forward to after a busy week of academic and athletic practices. I dedicate my attention to God and the message He asks of us. When I am in the chapel, I allow myself to be oblivious to all the events in my life and focus on the present and participate in the celebration of the Eucharist.”

LILLI



BLESSING FONT

The floor space around the blessing font depicts the Tree of Life, the great symbol of healing among nations.

On either side of the river grew the tree of life that produces fruit twelve times a year, once each month; the leaves of the trees serve as medicine for the nations. | Revelation 22:1-2

The scriptural citation *Revelation 22:1-2* is visible in the basin containing the water of the blessing font recalling our mission as disciples committed to Christ, to bring healing to our world. The base of the blessing font is constructed as a tree made of natural Wisconsin White Oak and Holy Land Olivewood. Together they hold an art glass vessel of holy water reaching out from the floor, complementary to the altar and the cross ahead recalling the words of Christ:

Go, therefore, make disciples of all nations; baptize them in the name of the Father and of the Son and of the Holy Spirit, and teach them to observe all the commandments I gave you. And look, I am with you always until the end of time. | Matthew 28:19-20

Placed here is the Paschal Candle, our symbol of new life in Christ, which is complementary in design to the other candle stands of the chapel.

The Sanctuary

The sanctuary, or altar space, is set apart from the main nave by a circular patterned floor with the Tree of Life motif (the earth) woven around this space. The altar stands as the focal point of the chapel, made of natural wood; natural Wisconsin White Oak and Holy Land Olivewood. The design of the altar suggests creation, reaching heavenward with the ossuary containing the relics of St. Teresa of Avila, and St. Theresa the Little Flower, located in the center beneath the mensa. The ambo is made of the same materials as the altar. Its base, similar to the altar, is complemented with an open scroll which reminds us of the words of Jesus, *“Today this scripture has been fulfilled in your hearing.”* (Luke 4:21)

The ambo is also designed in direct relationship to the shrine of Mary in this space. To each side of the sanctuary, in the openings of the former windows, are the images of the Archangel Michael (a patron of the Salvatorians), and the Archangel Gabriel of the Annunciation. These spaces are also versatile for seasonal decor, banners, flowers, seasonal icons, etc.



ALTAR



AMBO

“Eucharistic Adoration in the chapel is always such a peaceful, beautiful time. During Adoration, the lights in the Chapel are usually turned down, but sunlight streams through the stained glass windows onto the Monstrance. I can really feel Christ’s presence in moments like those.”

EMMA



TABERNACLE

The tabernacle is located behind the altar and stands on a pedestal cohesive to the design of the other sanctuary furnishings. This space is approachable and has room for private prayer and adoration, allowing the words of scripture to echo:

And eternal life is this: to know you, the only true God, and Jesus Christ whom you have sent. | John 17:3

The stained glass windows behind the tabernacle let in light from floor to ceiling, designed to provide a sense of shelter and focus for the tabernacle – the presence of Christ in our midst. The design looks towards eternity, to the heavens and the endless possibility of life. In the topmost branches is an angel – providing the presence of a guardian or messenger. The trees were chosen to symbolize the two heavenly trees referred to in Revelation, the same reference used at the font in the entrance. The base has a green border inspired by orchids.

Then he showed me a river of the water of life, clear as crystal, coming from the throne of God and of the Lamb, in the middle of its street. On either side of the river was the tree of life, bearing twelve kinds of fruit, yielding its fruit every month; and the leaves of the tree were for the healing of the nations. | Revelation 22:1-2



MANTEL OF OUR LADY

“Originally, I went into my first optional liturgy looking for validation, a ‘pat on the back’ for actually going to Mass; instead, I discovered the most beautiful and blessed community that I have ever experienced – DSHA Campus Ministry. I am so thankful for the weekly optional liturgies because of the huge impact and contributions to my prayer life.”

MADI

Above the altar hangs the main crucifix suspended from a dome. In the center of the dome is painted the Mantel of Our Lady. As it is tradition to paint the sky filled with stars in a chapel dedicated to Mary our Mother, we recall the words of Daniel the Prophet:

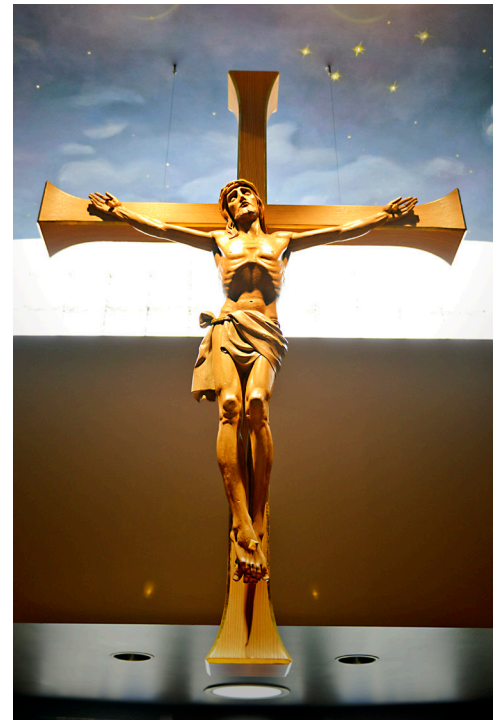
But the wise shall shine brightly like the splendor of the firmament; and those who lead the many to justice shall be like the stars forever. | Daniel 12:3

The domed sky depicts the crescent moon, the symbol of Mary's Immaculate Conception, and the constellation of stars that was dominant in the northern hemisphere the night of the dedication of the chapel, September 11, 2015 – the Cassiopeia, the seated queen. Cassiopeia was one of the 48 constellations listed by the 2nd-century Greek astronomer Ptolemy, and it remains one of the 88 modern constellations today. It is easily recognizable due to its distinctive 'M' shape when in upper culmination. In the 17th century various Biblical figures were depicted in the stars of Cassiopeia. These included Bathsheba, Solomon's mother; Deborah, an Old Testament prophet; Mary Magdalene, and most often Mary the Mother of Jesus, the Queen of Heaven.

Suspended from the center of this heavenly mantel is the chapel crucifix. The design is of Christ in the sleep of death, just before he was placed into his mother's arms. The wood of the cross is of the same as the woods of the altar. Together this image recalls the words of our Savior from the cross:

Here is your mother. | John 19:27

The crucifix is suspended between heaven and earth, drawing us toward the altar.



CHAPEL CRUCIFIX

The Nave



SHRINE OF THE MOTHER OF THE SAVIOR

“The Chapel has enhanced my practice of Mass, prayer, and rosary. I enjoy going to the weekly optional liturgies in the Chapel and praying the rosary beforehand.”

ELENI

At the former entrance to the chapel is the Shrine of the Mother of the Savior. This image depicts Mary as a woman of deep faith, seated and teaching her son Jesus, who holds a scroll of scripture while looking up to his mother. Mary is depicted with one arm around her son, the other holding the scroll, a tender image of a parent teaching her child in the way of the Lord. On the scroll Mary holds we read from the Prophet Isaiah, written in Greek, ***“The spirit of the Lord GOD is upon me.”*** (Isaiah 61:1) This recalls the passage in the Gospel of Luke:

Today this scripture has been fulfilled in your hearing. | Luke 4:21

On the pedestal in front of the image is the passage from the Prophet Isaiah in English:

***The spirit of the Lord GOD is upon me,
because the LORD has anointed me;
He has sent me to bring good news to the afflicted,
to bind up the brokenhearted,
To proclaim liberty to the captives,
release to the prisoners.*** | Isaiah 61:1

The shrine faces west and welcomes all to the chapel from the main classroom wing of DSHA. The image of Mary is placed against a background of translucent art glass. The window allows natural light to illuminate the shrine and gives a glimpse to the interior of the chapel from the outside hall. The glasswork is golden in color with a blue border at the top and bottom. The glass allows a view of the sculpture from the corridor. In the two side panels are white lilies – a symbol of Mary.

The Reconciliation Chapel is located to the right of the sanctuary. The two windows have natural light and create a beautiful, luminous and welcoming environment for prayer and reconciliation. The windows are richly colored and give a subtle message about one who is lost and then found. The window to the right has three flowers and the window on the left has one, giving the sense that the single flower has been found and will be gathered into the fold. The orchids are a subtle tribute to Sylvia DuBois, HA '46†, whose generosity allowed the vision of this chapel to be realized. Sylvia loved orchids. Included is the text: *“Celebrate and rejoice what was lost has been found.”* (Luke 15:32) Appropriate to this space is a crucifix. The restored, historic crucifix, dedicated by Archbishop Moses E. Kiley in 1962 for the halls of Divine Savior High School, is relocated here to complete this chapel space.

“Reconciliation at DSHA has allowed me to take a break out of my busy school day to reflect on the good things in my life, but also the things I need to work on. Reconciliation allows me to grow closer to God and strengthen our relationship. It is so nice that we have this built into our weekly schedule, allowing me to easily go and talk to God.”

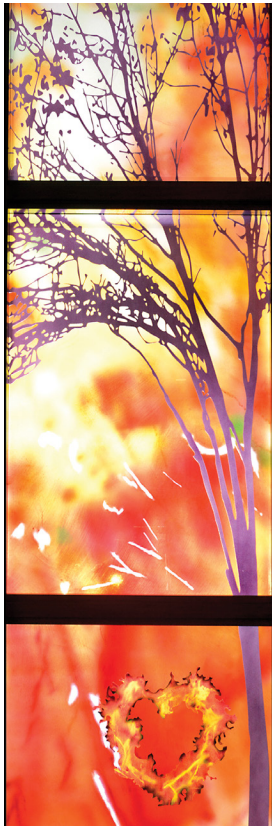
KATHLEEN

The Reconciliation Chapel



RECONCILIATION CHAPEL

The Four Main Windows



FAITH



HOPE



LOVE



ETERNITY

The Four Main Windows are symbolic on many levels. They relate to the sanctuary “Heavenly Jerusalem” theme but are also earthly reminders and symbols of the four women doctors of the church (from west to east) – St. Teresa of Avila, St. Catherine of Siena, St. Therese of Lisieux, and St. Hildegard of Bingen. Symbols of these four holy and inspirational women are included in the windows.

Like the days of a tree, so shall the days of my people be. | Isaiah 65:22

The coloration of the windows relates to the four seasons. The four elements are present in the heart aflame of Teresa of Avila (fire), the roses of Therese of Lisieux (earth), the ship of Catherine of Siena (water) and the heavenly stars of Hildegard of Bingen (air).

“It can be a challenge making it to optional Masses and services offered by CMC during my Dasher Times, but having Mass set into my schedule gives me that chance to still be active in my faith and participate.”

AIMEE

Faith – St. Teresa of Avila (1970)

This window is dedicated to the passionate mystic St. Teresa of Avila, whose emblem of the heart aflame is also a symbol of Faith. Remembering what it was like to experience a pure devotion to God after the angel thrust the spear into her heart, Teresa aimed to give her best to God, and to urge others to do the same. The rich, warm colors denote the fall season.

Hope – St. Catherine of Siena (1970)

This window is dedicated to the remarkable visionary St. Catherine of Siena. Her emblem of a ship is a symbol of Hope. Several weeks before her death as she was praying before a mosaic in the original St. Peter’s Basilica, she saw Peter’s fishing boat leave the mosaic and land on her shoulder. The window embraces the summer season and a sea of blue.

Love – St. Therese of Lisieux (1979)

This window is dedicated to the dear St. Therese of Lisieux, with her emblem of roses. “After my death, I will let fall a shower of roses. I will spend my heaven doing good upon earth. I will raise up a mighty host of little saints. My mission is to make God loved.” The season of springtime and its welcome of flowers is used as the background.

Eternity – St. Hildegard of Bingen (2012)

This window is dedicated to St. Hildegard of Bingen and inspired by her “field of stars” illumination. Hildegard composed many liturgical songs that were collected into a cycle called the “Symphonic Harmony of Heavenly Revelations.” The cool winter season and moon were chosen as the background.

The Walls

Along the west side wall are the Stations of the Cross. Each station has a cross with the Roman numeral and a medallion with the changing face of Christ as he endures His passion, allowing for various forms of the Way of the Cross to be prayed by the students.

In the four corners of the Chapel are the four dedication candles and crosses. These candles recall the date of the dedication of the space and are lit on the anniversary of the dedication and the feasts of Mary.



DEDICATION CANDLES & CROSSES



STATIONS OF THE CROSS



THE NATIVITY



THE BAPTISM OF JESUS

Each of these four, authenticated icons depicts important moments from Salvation History and the Life of Jesus, our Divine Savior. The four icons depict the Nativity, the Baptism of Our Lord, the Crucifixion and the Resurrection.

The Nativity:

Mary is depicted strongly here as the Mother of Our Savior, kneeling with Joseph beside the newborn Jesus. Following Eastern iconography, Jesus is wrapped in swaddling clothes and lying in a cave, surrounded by the shepherds, angels and the Magi.

The Baptism of Jesus:

In Scripture, this is the moment where God declares that, **“This is my beloved Son, in whom I am well pleased.”**

(Matthew 3:17) This image reminds us of our baptism – where we become children of God as well – united in the call through the waters of baptism and the Jordan River, depicted in the Icon.

The Crucifixion:

Once again, Mother Mary appears as the Mother of Our Savior in the very moment Salvation is won. She stands at the foot of the Cross, looking upon her dying Son. This image is a strong and beautiful contrast to her appearance in the image of the Nativity.

The Resurrection:

The final icon depicts Jesus as Divine Savior, descended into Sheol to save our ancestors in faith. Jesus is shown as the Savior of all through his Resurrection, raising Adam, Eve, King David, King Solomon and other Old Testament figures.



THE CRUCIFIXION



THE RESURRECTION

These pivotal moments in Salvation History tell the importance of Jesus' title and role as Our Savior, as well as Mary's journey as the Mother of Our Savior. The balance between the icons is important: two icons from the beginning of Jesus' life and ministry, two from the end of His life on earth, two featuring Jesus' divinity, and two featuring Mary's importance as His mother. Including these in the Mother of Our Savior Chapel deepens the scriptural insights of the Paschal Mystery, as well as further emphasizing Jesus as our Savior and Mary as His Mother.

CAMPUS MINISTRY CENTER

From The Director of Campus Ministry



Director of Campus Ministry
Kathleen Cullen Ritter, DSHA '05

To learn more, visit
dsha.info/faithformation.

“

The Campus Ministry Center is a space for all students at DSHA regardless of faith tradition. It is a place where students can make God known to others through planning service projects, retreats, masses, and by simply spending time with each other in casual conversations. The campus ministers encourage each student to learn and take leadership of her own faith formation in a friendly, supportive faith-based community.

On most days, many groups of students pack the center to connect and comfort one another through their positivity and inspiration. At times, the Campus Ministry Center is also used for large groups of students who are seeking healing and understanding due to personal, social or emotional challenges. The Campus Ministry Center also offers a place for grief support when students are encountering the loss of a loved one.

Having a space where organic faith formation occurs is the highlight of my job. The pastoral support we are able to offer because of the center – and its close proximity to the chapel – allows students to strengthen their faith, meet new friends and worship with others.

Apart from the organized programs of Campus Ministry, the chapel creates a comfortable and comforting gathering place where students can have conversations about where God is in their life and openly deal with questions of faith.

”

"I love that CMC is open all day long because I have the chance to work on retreat planning or connect with people that also share a passion of faith and service. The CMC space is cared for so much – it is transformed into a place of faith and open arms. The architecture of the Campus Ministry Center and Chapel truly capture the needs of students by providing quiet, private areas for worship, rooms for reconciliation, and space for planning the various events that CMC hosts and plans."

AIMEE



Prayer & Worship

The DSHA Campus Ministry department aims to promote students' Catholic Christian identity by supporting students through opportunities to deepen their faith and to grow as young women leaders in the Church – both as individuals and within community. Our mission is to give every student the opportunity to worship God, explore her faith, and come to a deeper appreciation of spirituality during her four years at DSHA. Whether through all-school Mass, participation in the Liturgical Seasons, or taking the time during a Wellness hour for quiet prayer in the Mother of Our Savior Chapel, students are encouraged to live out, explore, and grow in their faith through multiple prayer and worship avenues.



Each day, the DSHA community takes time to stop, reflect and pray – lead by both students and faculty/staff. Regular all-school liturgies focus on developing an understanding and love of God – planned by students who are developing as faith-filled leaders in the Church. And weekly optional liturgies in the Mother of Our Savior Chapel offer an invitation to say the rosary and share special intentions.

To learn more, visit dsha.info/worship.

“From classes to club meetings to after-school activities, my school days are very busy! All-school Masses and weekly optional liturgies are perfect ways for me to step back, put it all in perspective, and spend some time with Christ. Mass at school reminds me of the greater purpose of my education and to be grateful for all that I have.”

EMMA

“Service has greatly impacted my personal faith and relationship with the Church because it provides me with the hands-on experiences of truly living the faith. Our service work, specifically with the poor and vulnerable, provides us with a deeper understanding of God’s message in the gospel and has helped me develop a deeper and more worldly faith.”

MADI



Service

Service is at the heart and root of the DSHA faith formation experience. Through hands-on opportunities to serve the poor, vulnerable, and outcast persons, students live out their faith by being the hands and feet of Jesus to the city of Milwaukee. Students may be found serving in the following ways: serving special needs through Easter Seals, visiting the elderly at care facilities, organizing food collections and sandwich making on campus, or tutoring in an urban school setting.

Upon graduation, each student will have completed the Salvatorian Service Requirement, participating in a minimum number of service hours each year. Freshmen begin their service requirement through Freshmen Service Day, while seniors complete at least 70 hours of service through participation in the capstone VOCARE service experience.

To learn more, visit dsha.info/service.

Retreats

Retreats are an integral part of the faith formation experience at DSHA. They provide a safe space for each young woman to explore and ignite her individual faith while connecting with her classmates personally and spiritually. Grounded in scripture and based on a model of peer ministry, DSHA retreats cater to female adolescent spirituality by recognizing the process of faith development and emphasizing the importance of community through shared experiences. Worship, small and large group discussions, along with individual prayer and reflection time, allow girls to grow both as individuals and with her peers. Student leaders organize and execute all aspects of grade-level retreats.

DSHA Retreat Opportunities:

Freshmen Retreat | Take Flight
Sophomore Retreat | Through the Turbulence
Junior Retreat (optional) | Present to the Spirit
Senior Retreat | Saying Yes
Senior Retreat (optional) | Anchored in Your Faith

To learn more, visit dsha.info/retreats.

“The most impactful part of my faith formation at DSHA has been the retreats. They have helped me form a better relationship with God and my classmates, and I always feel more strongly rooted in my faith after the experience.”

ELENI





Campus Ministry Council

Campus Ministry is driven by a group of student leaders who strive to realize the mission of Jesus Christ within our school community through peer-to-peer relational ministry. These young women offer their classmates opportunities for prayer, worship, service and social justice throughout the year. With a focus on Fr. Jordan Awareness Week, Advent, Lent and Catholic Schools Week, the Campus Ministry student leaders aim to bring students' faith to life during each school day – all year long.



Campus Ministry Council also elects the leaders and coordinators for each of DSHA's retreats, and helps to plan and coordinate various service, prayer, and worship opportunities throughout the year. Over 240 Campus Ministry leadership positions exist, allowing girls to nurture growth in each of the DSHA Qualities of a Graduate – particularly as believers, communicators and leaders. From planning retreat or coordinating prayer, to running the student auction or serving on the Mass music team, there is truly a position suited for any girl with a desire to serve.



To learn more, visit dsha.info/CMC.

“My involvement in Campus Ministry has had a positive and uplifting impact on my faith as I continue to grow and learn. The welcoming and supportive community has made it possible for me to develop my faith as much as I have while being at DSHA. If it were not for the amazing example my classmates set for me, I would not be as strong in my relationship with God or with others.”

LILLI



DSHA

Divine Savior Holy Angels High School

SPONSORED BY THE SISTERS OF THE DIVINE SAVIOR

4257 N. 100th St. | Milwaukee, WI 53222

All Girls Makes All the Difference | dsha.info