

DSHA

Divine Savior Holy Angels High School



All Girls Makes
All the Difference



DSHA

is **READY** for you!

Will you let us show you what life as a DSHA student looks like? We are certain that when you become a Dasher you will find your place to belong.

- Grow in **confidence** in the all-girls classroom.
- Live out your gifts, serve others, and know your worth in a **faith community**.
- **Find your place**—on a team or stage, in a co-curricular, and more.
- Find your **voice** as you discover and explore your **passions**.
- Meet **new friends** in a **sisterhood** that will last a lifetime.



635 girls from
127 middle schools



78% of students
are Catholic



34% of students
identify as students
of color

Table of Contents

- 3** | Who We Are ▶ The DSHA Mission, Vision, and Qualities of a Graduate
- 5** | Why All Girls Makes All the Difference
- 9** | Innovation in Whole-Person Education
- 11** | College-Prep Academics
- 13** | All-Girls + STEM
- 15** | College Preparedness + Planning
- 17** | Faith Formation & Catholic Identity
- 23** | Student Services
 - ▶ Mental/Social/Emotional Health + Counseling
 - ▶ Academic Planning + Support
- 27** | Applied Wellness
- 28** | Diversity, Equity, and Inclusion
- 29** | Co-Curriculars
- 31** | Dasher Athletics
- 33** | Fine Arts
- 35** | Marian Scholars
- 37** | Transition to High School
 - ▶ College-Prep Environment + Social
- 39** | Scholarships & Financial Aid Opportunities
- 43** | Location + Transportation
- 45** | Learn More about the All Girls Difference at DSHA
- 49** | How to Apply
- 50** | DSHA School Profile
- 50** | 2023-24 | Important Dates

**We would love
to hear from you—
any time!**

For questions or more information, please visit dsha.info/admissions or contact one of our admissions staff:

**Director of Admissions and
Financial Aid Ann Duffy, DSHA '10**
DuffyA@dsha.info | 414.616.2805

**Admissions & Marketing Coordinator
Meaghan Lagore, DSHA '16**
LagoreM16@dsha.info | 414.721.2909

Si prefiere información en español
favor de ponerse en contacto con:

**Maria Enachi, Secretaria de
Servicios Estudiantiles**
EnachiM@dsha.info | 414.721.2913

WHO WE ARE

Faith. Heart. Intellect.

The DSHA **Mission**

Divine Savior Holy Angels High School is a Catholic college-preparatory high school for young women that excels at developing the whole person. Sponsored by the Sisters of the Divine Savior and grounded in their mission to make known the goodness and kindness of Jesus Christ, *we develop our students into capable young women of faith, heart, and intellect who accept the gospel call to live lives that will make a difference.*

The DSHA **Vision**

DSHA WILL BE:

Recognized as the premier choice for a girl seeking to grow into her full potential as a woman of faith, heart, and intellect.



The 5 Qualities of a DSHA Graduate

These qualities find their foundation in the DSHA mission as we are intentionally focused on helping you become a confident and capable young woman. Over your four years as a Dasher, within the safe space of an all-girls environment, the DSHA faculty and staff will help you become these qualities. You will grow in confidence while you develop into each quality—from the time you step foot on campus until your graduation day.

SHE IS A

**Woman of Faith.
Self-Advocate.
Critical Thinker.
Communicator.
Leader.**



**DSHA Core
Values**

Scan to learn more.

Learn more at dsha.info/qualities.

Why does **ALL GIRLS** make all the **DIFFERENCE?**

At DSHA, we are dedicated to how girls learn best—in all aspects of who they are. We take girls seriously while they take center-stage as leaders in the classroom and beyond—empowered to find and practice using their voice as they become who they are meant to be in the world.



The Benefits of an All-Girls Classroom + School Environment

* **Higher self-confidence** where girls get to be their authentic selves

* **Higher achievement** in both aspirations and accomplishments

* **Increased STEM** interest and ability

* **Double the leadership** opportunities

* **More supportive and engaging classroom** and social environment

“My confidence has grown so much since arriving at DSHA. I have had so many opportunities to be a leader in a safe and accepting environment. I’ve learned to own my voice and speak up in and outside of the classroom. I love the built-in support system and non-judgmental environment that an all-girls school brings. There are so many opportunities to meet new people and try new things because you are not pressured to look or be a certain way. You can really be yourself. I have tried new things that I am not sure I would have at a co-ed school—and feel supported in all of it.

— Ada, DSHA '24 | Wauwatosa

“I see it every year in our girls. They come in unsure of what high school will hold and where their place will be, and they leave as confident and capable young women ready to take on the world around them. They spend four years seeing other girls lead—whether in the classroom, Campus Ministry roles, or co-curriculars. It is so important for teenage girls to have peer role models. They see the value in others, and in turn themselves. They raise their hands, they ask questions—they get to come to school every day exactly as they are. This breeds self-confidence. Seeing this develop in our girls is one of the greatest joys of my role as president.”

— DSHA President Katie Konieczny, DSHA '92

continued >

The ALL-Girls Difference is ALL about Girls ... and ALL in the Data!

Higher Self-Confidence



Girls school grads report higher self-confidence over their co-ed peers.¹

This can be attributed to more positive social interactions, a safe space to share ideas and ask questions, and having 100% of leadership roles occupied by girls.

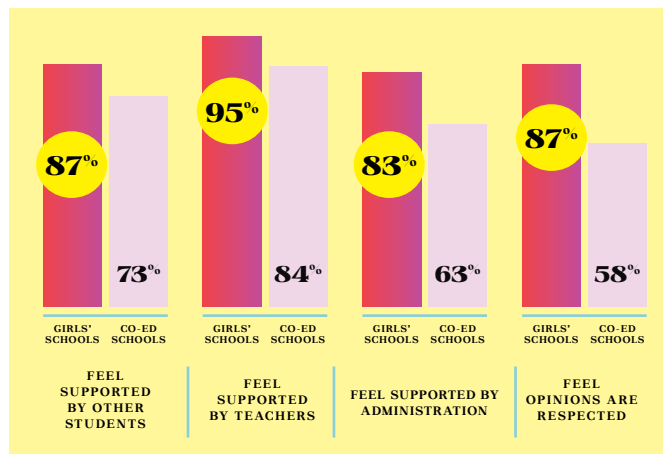
Girls school grads report higher science self-confidence over their co-ed peers.²

This pertains to their ability to use technical science skills, understand scientific concepts, generate research questions, explain study results, and determine appropriate data collection.

▲ *For more data on all-girls + STEM, see page 13.*

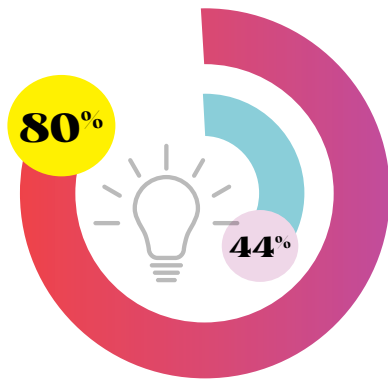
A Supportive Environment Dedicated to How Girls Learn Best

Girls' schools capitalize on the unique learning style of girls, with students experiencing a higher level of support from classmates and teachers than female peers in co-ed schools. This support translates into actions geared toward success and allows girls to experience an environment that encourages a more open and safe exchange of ideas.³

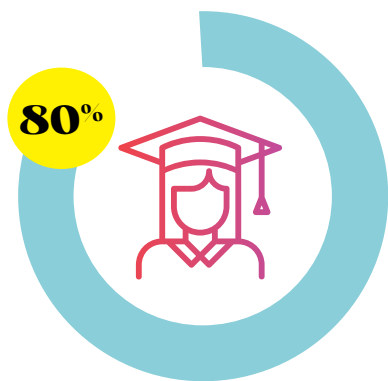


Nearly 96% of all-girls' school students report receiving **more frequent feedback on their assignments** and other coursework than girls at co-ed schools.¹

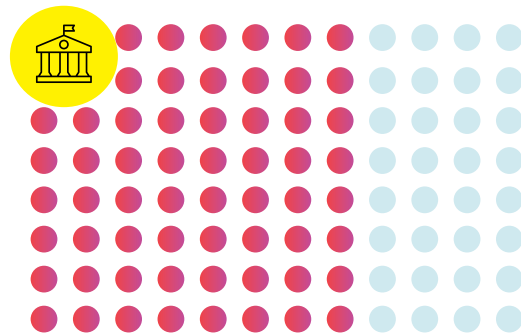
Girls' School Students Achieve



80% of girls' school students vs. only 44% of co-ed public school students report that most of their classes challenge them to **achieve their full academic potential.**³



80% of girls' school grads consider their **academic performance highly successful.**¹



Girls' school students have heightened career aspirations. **2/3** of girls' school students expect to **earn a graduate or professional degree beyond undergrad.**⁵



93% of girls-school grads say they were offered **greater leadership opportunities** than peers at co-ed schools, and **80%** of grads have held **leaderships positions since graduating** from high school.³

ICGS Research Sources:

¹Women Graduates of Single-Sex and Coeducational High Schools: Differences in Their Characteristics and Transition to College

²Dr. Tiffani Riggers-Piehl, University of Kansas City, Missouri, Fostering Academic and Social Engagement: An investigations into the Effects of All-Girls Education in the Transition to University.

³Dr. Richard A. Holgren, Allegheny College, Steeped in Learning: The Student Experience at All-Girls School

Innovation in **WHOLE-PERSON** education

DSHA is committed to an innovative, dynamic, and departmentally integrated approach to you and your high school education—an education that will care for all aspects of who you are!

Our promise to you is this:

An experience that combines outstanding academics for college preparation with deliberate dedication to the development of your whole person, all grounded in Catholic faith formation. During your four years at DSHA, a school-wide commitment from the faculty and staff will allow you to grow in the many dimensions that make you **YOU**. You will gain an understanding of how to manage your own overall wellness—intellectual, spiritual, physical, and mental/social/emotional—during the high school years and beyond.



An All-Inclusive School Day

At DSHA, an innovative schedule will allow you a structured environment to prioritize your own overall wellness as you grow in all areas of who you are. In addition to your academic courses, there will be times built into your schedule to help you transition into the college-prep environment, with a focus on your whole person. This includes set times throughout the week to participate in faith formation and co-curricular activities; opportunities to meet with a teacher or counselor; and designated hours for Applied Wellness and physical fitness classes.



First Semester Freshman Schedule | Sample Week*

*All classes will have the same number of instructional minutes each semester.

Monday	Tuesday	Wednesday	Thursday	Friday
Algebra	Algebra	▼ Late start day! 1 st hour starts at 8:45 a.m.	Latin	Algebra
Latin	Latin	Algebra		
Dasher Time: Dasher Dens	Dasher Time <i>Finish social studies homework.</i>	Latin	Freshman Wellness <i>Today's Topic: Time Management</i>	Theology The Bible
Theology The Bible	Theology The Bible	Theology The Bible	Dasher Time <i>Study for English quiz in library.</i>	Dasher Time <i>Meet with Latin teacher.</i>
Freshman Fitness	Freshman Fitness	Freshman Fitness	All-School Mass	Co-Curricular <i>SMART Team</i>
Lunch	Lunch	Lunch	Lunch	Lunch
Freshman Resource Study Hall <i>Study for biology test!</i>	Freshman Resource Study Hall <i>ALPHA Center for help with math homework.</i>	Freshman Resource Study Hall <i>English paper due tomorrow!</i>		
Biology	Biology	Biology	Biology <i>Lab today!</i>	Freshman Resource Study Hall <i>Meet with counselor.</i>
Cultures and Civilizations	Cultures and Civilizations	Cultures and Civilizations		
College-Prep English	College-Prep English	College-Prep English	College-Prep English	Cultures and Civilizations

College-Prep

ACADEMICS

DSHA is committed to teaching girls in the ways they learn best. Because of this, you will grow in confidence in the classroom through the all-girls environment—without distractions—as your teachers support you through four years of increasingly rigorous courses with a focus on the expectations of college classes and programs. A deliberate, solid foundation of interconnected scope and sequence will ensure you are prepared for college and beyond.



12:1

***Student to
Teacher Ratio***

Teachers Committed to How Girls Learn Best

- Your teachers will guide, motivate, and inspire your learning every day.
- They will seek to maximize your intellectual abilities, and encourage and advocate for you by balancing the high expectations of a rigorous curriculum with positive reinforcement along the way—they want you to succeed!
- They are committed to developing your college-prep learning skills and study habits.

DSHA Academic Departments

DEPARTMENTS	CREDITS REQUIRED* For Graduation
English	4
Theology	4
Mathematics	3
Science	3
Social Studies	3
World Languages	2
Fine Arts > Music Theatre Visual Arts	1
Health & Fitness	.75
Specialized Studies	.5
OTHER GRADUATION REQUIREMENTS	
Electives	2
Service	1
Applied Wellness	.75

Curriculum

A Balanced Course Load

- DSHA's college-preparatory curriculum challenges each student to think critically and communicate effectively while preparing for her college experience.
- While the curriculum is rigorous, DSHA faculty, administrators, and counselors will emphasize the importance of balance in a student's academic course load, along with all other aspects and opportunities that make up the whole-person education at DSHA.

**For academic areas of study, 1 credit is the equivalent to one year-long course, or two semester-long courses.*

ALPHA CENTER

Academic Learning Place for Higher Achievement

- Your schedule is structured so you have specific frames of time to get the help you need.
- Visit the ALPHA Center during study hall. English, math, and science teachers are available during each period to answer your questions.
- Your teachers have designated times in their own schedules to accommodate you and your classmates outside of ALPHA Center hours, as well.



ACADEMICS

ALL-GIRLS & STEM

STEM at DSHA

Critical thinking and problem solving, creativity and innovation, collaboration and entrepreneurship—this is the foundational basis of STEM at DSHA. And it all happens within the all-girls environment that will set you up to pursue excellence as you grow in science and math self-confidence with a vision for your future. You will move from a foundational knowledge-base into the ability to integrate and apply the concepts of mathematics and science toward real-world problem solving.

STEM Confidence and Vision *By-the-Numbers*

- Girls' school grads on average report **greater science self-confidence** than co-educated peers! From the class of 2023, **61% of DSHA graduates** intend to major in a STEM field in college.⁴
- Girls' school grads are **6 times more likely** to consider **majoring in math, science, and technology** compared to girls who attend co-ed schools.²
- Compared to co-ed peers, girls' school grads are **3 times more likely** to consider **engineering careers**.³



¹Dr. Tiffani Riggers-Piehl, University of Kansas City, Missouri, Fostering Academic and Social Engagement: An Investigation into the Effects of All-Girls Education in the Transition to University

²Goodman Research Group, The Girls' School Experience: A Survey of Young Alumnae of Single-Sex Schools

³Dr. Linda Sax, UCLA, Women Graduates of Single-Sex and Coeducational High Schools: Differences in their Characteristics and the Transition to College

⁴Number based on 140 students who reported an intended area of study, including "undecided."

AP STEM Classes at DSHA

*% of students who took the AP exam scoring 3+,
the number required to qualify for college credit*

	DSHA AP Scores 2023*	vs.	National AP Scores*
AP Physics C Mechanics	100%		74%
AP Biology	93%		61%
AP Chemistry	92%		54%
AP Statistics	90%		61%
AP Calculus (AB+BC combined)	77%		62%

*Scores are from the most recent DSHA data (2023) and most recent national AP aggregate data at the time of printing (2022).

Advanced STEM Classes

Mathematics

- ▶ AP Calculus (AB)
- ▶ AP Calculus (BC)
- ▶ Discrete Mathematics
- ▶ Linear Algebra
- ▶ College Algebra*

Science

- ▶ AP Biology
- ▶ AP Chemistry
- ▶ AP Environmental Science
- ▶ AP Physics C Mechanics
- ▶ Honors Anatomy & Physiology
- ▶ Biological Concepts*

Specialized Studies

- ▶ Introduction to Engineering
- ▶ Introduction to Computer Science
- ▶ AP Computer Science A
- ▶ AP Statistics
- ▶ AutoCAD
- ▶ Advanced Economics

*Dual college-credit course

Additional STEM Offerings

STEM Scholars Program

This application-based program follows the guidelines of the American Society for Engineering Education, and is for students seeking to integrate and apply their knowledge of math and science in order to create technologies and solutions for real-world problems, using an engineering design approach.

DSHA STEM Scholar students participate in the following guided opportunities:

- Committed engagement in various math and science courses that apply concepts in creative ways.
- Small group meetings that provide enrichment opportunities, support, and professional mentoring in STEM fields.
- Learning and applying the engineering design process as an approach to creative problem-solving.
- Partnerships with local universities and businesses to support STEM study and career interest.
- Personal and professional growth along with a head start on a STEM-related career path.

Co-Curricular Opportunities

- ▶ **SMART Team** | Students Modeling a Research Topic—works in collaboration with the Medical College of Wisconsin and American Society for Biochemistry and Molecular Biology.
- ▶ **Robotics Team** | Hilltopper Robotics Team 1732 partners DSHA with MUHS, in conjunction with FIRST (For Inspiration and Recognition of Science and Technology).
- ▶ **Biology Eco Adventure** | On-Site Costa Rica Field Study
- ▶ **HOSA** | Health Occupations Students of America
- ▶ **Math Club**
- ▶ **School Ecology Club**

For more information, visit dsha.info/stem.

ACADEMICS

College Preparedness & Planning at DSHA

College Credit in High School

You will have a number of opportunities to get a jump on college credit—(and tuition!)—through two types of college level classes: Dual-Credit/Concurrent Enrollment and Advanced Placement. With 29 total classes across 8 departments, there are multiple opportunities for students across a wide range of disciplines and interests. (Credits may be dependent upon individual college/university.)

17 AP Year-Long Courses

English	<ul style="list-style-type: none">AP English Literature and CompositionAP English Language and Composition
Fine Arts: Visual Arts	<ul style="list-style-type: none">AP Art: 2D Design
Math	<ul style="list-style-type: none">AP Calculus (AB)AP Calculus (BC)AP Pre-Calculus
Science	<ul style="list-style-type: none">AP BiologyAP ChemistryAP Environmental ScienceAP Physics C Mechanics
Social Studies	<ul style="list-style-type: none">AP European HistoryAP Human GeographyAP U.S. Government & PoliticsAP U.S. History
Specialized Studies	<ul style="list-style-type: none">AP Computer Science AAP Statistics
World Languages	<ul style="list-style-type: none">AP Spanish Language and Culture

Since 2018, AP enrollment at DSHA has grown 26% with

641 enrollments in the 2022-23 school year.

576 Total number of AP exams taken by DSHA students during the 2022-23 school year, a 17% increase from the previous school year, with

90% of enrollments choosing to take the AP exam for college credit.

DSHA is far outpacing the national average for AP scores.

76% and **77%**

of the 2023 and 2022 DSHA AP exams, respectively, earned a score of 3 or higher, the number needed to qualify for college credit.

Comparatively, the national average for the same AP exams with a score of 3 or higher in 2022 was

***59%**

*Note: at the time of publication, the 2023 AP national score averages had not yet been published.

12 Dual (College) Credit Opportunities at DSHA

**Denotes year-long course; all others are one semester.*

English

- Marquette University | Texts, Social Systems, and Values
- Marquette University | Modern Irish Literature
- UW-Whitewater | Contemporary Literature

Math

- Marquette University | College Algebra*

Science

- UW-Oshkosh | Biological Concepts*

Specialized Studies

- Mount Mary University | Exceptional Learners (Marian Scholars Peer Mentor)

Social Studies

- Marquette University | Topics in History: Post World War II America
- Marquette University | United States Foreign Policy

Theology

- Marquette University | Survey of World Religions
- Marquette University | Christian Faith & Justice

World Languages

- UW-Whitewater | Intermediate French*
- University of Minnesota | Intermediate Latin Poetry: Vergil*

Individualized College Planning

DSHA's College Counselor will work with you:

- Individual consultation with you, your parents, and your teachers.
- Develop an individual plan for you to pursue your college and career goals.
- Schedule your college visits and admissions representative meetings.
- Coordinate your standardized tests (Pre-ACT, PSAT, AP, and ACT).
- Facilitate college scholarship and award opportunities.



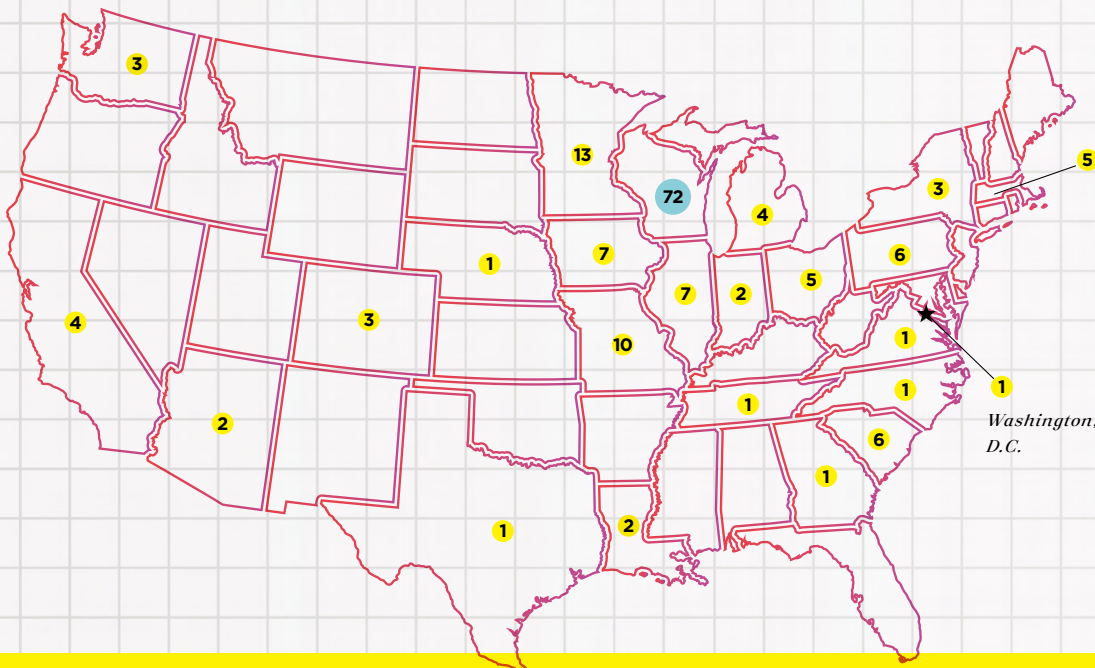
Class of 2023 | College Matriculation

At a Glance

- 100% high school graduation and college acceptance.
- 165 graduates are attending 61 different colleges and universities.
- 24 members of the class were accepted at the most selective schools (acceptance rates of less than 20%.)
- 35% of Dashers are attending a Catholic College or University.
- 53 Dashers are attending a BigTen University.

\$24,254,981*

***Reported scholarship dollars to accepted colleges and universities for the DSHA Class of 2023.**



DSHA Class of 2023 College Matriculation by State

Learn more at dsha.info/collegecenter.

FAITH FORMATION

and Catholic Identity

Grow in your relationship with God; pray and attend Mass in a Catholic community; and live out the goodness and kindness of Jesus Christ in service alongside of your friends. With the experience rooted in the Salvatorian mission and sponsored by the Sisters of the Divine Savior, each girl will grow in her faith as she grows into a globally-aware citizen, living her faith and using her gifts to advocate for justice and the needs of others.

Theology at DSHA → Primary Goals

- Learning is rooted in St. Augustine’s perspective of theology as “faith seeking understanding”.
- Spirituality is nurtured through knowledge of faith.
- To engage students in service to God and others.
- Faculty and staff commitment to transform students to transform the world.

Theology At-A-Glance:

	<i>Freshman Yr.</i>	<i>Sophomore Yr.</i>	<i>Junior Yr.</i>	<i>Senior Yr.</i>
<i>1st Semester</i>	The Bible	The Sacraments	The New Testament	Christian Spirituality OR Survey of World Religions*
<i>2nd Semester</i>	Christology	Catholic Morality	Church History	Christian Faith + Justice*

▲ Courses and curriculum are aligned with the United States Conference of Catholic Bishops document: *Doctrinal Elements of a Curriculum Framework for the Development of Catechetical Materials for Young People of High School Age.*

Campus Ministry at DSHA

A relationally-based, staff and peer ministry model is specifically rooted in the ways teen girls grow spiritually, and connect to God and one another. The peer ministry model of faith development allows for students to participate in meaningful faith-filled programming alongside of classmates, see other girls practicing their faith, and eventually take on Campus Ministry leadership roles of their own.

Prayer, Liturgy, and Worship

Live out your faith and practice the presence of God through daily all-school prayer, weekly Mass, Eucharistic Adoration, reconciliation, rosary, special programming during Advent and Lent, and more.

Retreats

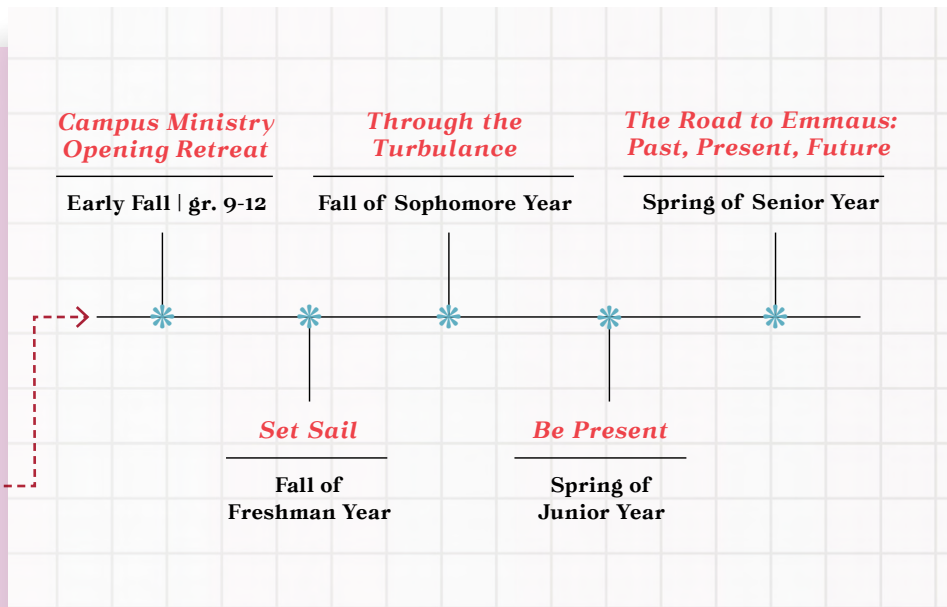
Retreats provide a safe place for you to explore and ignite your individual faith while connecting with classmates through shared experiences; all tailor-made for the teenage girl, grounded in scripture, and based on a model of peer-ministry.

Service

Join in on the nearly 25,000 hours of student service (in one school year!) as you live out the gospel call to advocate for the needs of others—rooted in the Salvatorian mission to be the hands and feet of Jesus Christ in the world.

Presence and Pastoral Ministry

Campus Ministry staff are available to students throughout the day for care, support, and guidance as needed.



FAITH FORMATION & CATHOLIC IDENTITY

CAMPUS MINISTRY ALL-SCHOOL + OPTIONAL OFFERINGS

Philosophy

Campus Ministry at DSHA is an intentional combination of all-school and optional opportunities built upon the understanding that faith is personal to each girl. When students are offered an environment of choices in which to engage their faith, they can actively say “yes” to growing their relationship with God in a way that is meaningful and personal among community.

- **All-School Offerings** | All students are involved in Campus Ministry through monthly all-school Masses, annual retreats, and service programs. Theology classes and student-led prayer also bring faith into the daily student experience.
- **Opt-In Opportunities** | Girls are given the opportunity to opt-in to faith formation activities in order to find a sense of belonging in their faith. DSHA’s peer-connected opportunities help young women grow spiritually in a way that is meaningful to the individual, while authentically connecting with one another in a Catholic community. The peer ministry model of faith development allows for students to see other girls practicing their faith, and then choose to take on Campus Ministry roles that are meaningful to them.

“The more people surrounding teenage girls and the more opportunities they have for meaningful prayer, reflection, and service, the greater the chance they have of living their faith long term. The more they choose their faith for themselves now, the more likely they are to enter college and keep living that faith without their parents or teachers requiring it of them... because it is just who they are. I want our girls to have the deep-down confidence that God loves them, and to choose that relationship with God for themselves. When that confidence settles in, it allows you to be the person you were meant to be in the world.”

— *Director of Campus Ministry*
Stephanie Monson

2022-23 SCHOOL YEAR

Campus Ministry

By-the-Numbers

5

Different retreats held.



11

Faith-based co-curriculars.



37

Masses celebrated:

- ▶ **9** All-School
- ▶ **27** Faith Fridays



51

Vocare sites visited during the senior class service-immersion experience.



60

Hours of optional Eucharistic Adoration held.



140

Student-held Campus Ministry leadership positions.



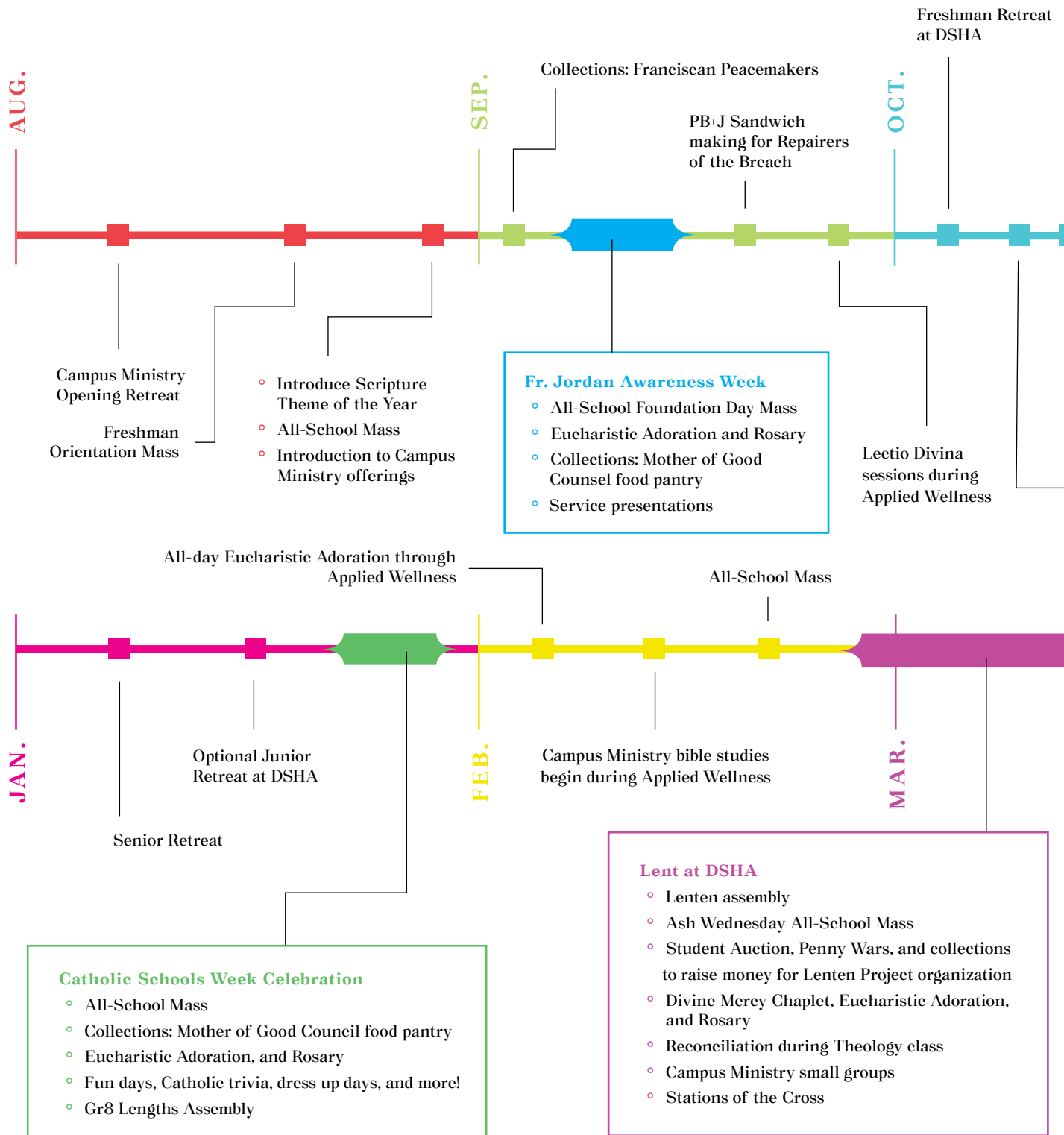
164

Average number of students choosing to attend option Faith Friday Mass each week.

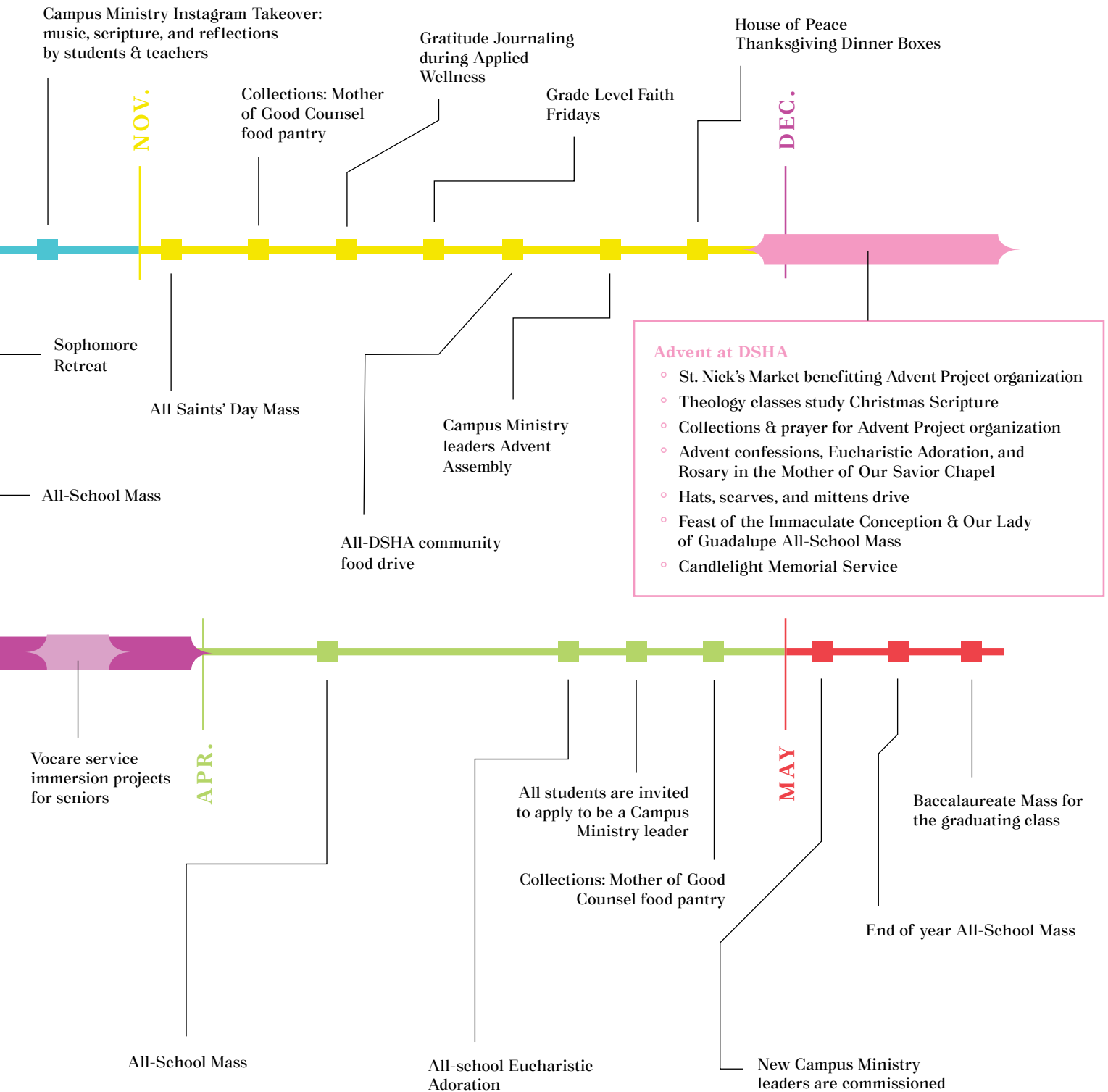


FAITH FORMATION & CATHOLIC IDENTITY

A YEAR-IN-THE-LIFE OF CAMPUS MINISTRY



All year long, DSHA's Campus Ministry Department offers peer-connected opportunities for students to help them grow in their faith and authentically connect with others as a Catholic community. Below are some highlights from the programs that enhance the ongoing faith formation offerings that occur throughout the year. Ongoing opportunities include daily community prayer, weekly Masses, Sacramental life, theology classes, and service.



STUDENT SERVICES

Serving the mental/social/emotional, academic, and college/career needs of students.

At DSHA, this department is student-centered, community-focused, and fully dedicated to the mental/social/emotional, academic, and college and career needs of our students. The entire staff will guide students to accept life's challenges with confidence as advocates, collaborators, advisors, teachers, coaches, and supporters. Student Services serves students. At the beginning of high school, programming and support will focus on ensuring each girl is able to navigate her college-prep experience in a healthy community with resources tailored to meet her needs. As students move throughout their four years, Student Services offerings shift to an intentional and individualized focus on college and career readiness.



Did you know?

DSHA holds one of the lowest student to counselor ratios in the state of Wisconsin.

An integrated staffing structure specialized in meeting the needs of students:

- 1 Director of Student Services
- +
- 3 School Counselors
- +
- 1 Director of Diversity, Equity, and Inclusion
- +
- 1 Licensed School-Based Therapist
- +
- 1 Director of College Counseling
- +
- 1 Applied Wellness Director
- +
- 5 Support Staff

= **A stellar staffing structure ready to meet your needs!**

Here is what this means for you:

- 1 **More direct access to counselors.** Because they are freed up from administrative tasks, unlike the typical public school staffing model, they have more time to meet with and counsel students.
- 2 **On-site therapy** for students in need, in collaboration with Children's Wisconsin.
- 3 **A more individualized approach to college planning** than that of a typical high school. Our dedicated college counselor will walk you through every step of the way to not only find the right college for you, but to also lessen the anxiety and stress that can come with the process.

Turn the page to see how Student Services meets the needs of DSHA students freshman—senior year. >>



WHAT DOES STUDENT SERVICE DO FOR DSHA

Ongoing + Year-Long Support

GRADES 9-12

Mental, Social, and Emotional Support

- Daily counseling availability
- Individual consult with students, parents, and teachers/staff
- Intervene with students of concern
- Offer referrals to and collaboration with outside agencies
- Children's Wisconsin On-Site Therapy

Academic Planning & Support

- Advise students on course selection
- Consult individually with students, parents, and teachers/staff
- Testing accommodations
- Monitor high-need students
- Facilitate staffings (with students, parents, and teachers) regarding concerns



Student Services

Summer Before

**FRESHMAN
YEAR**

- Leadership Bootcamp
- Camp Dasher
- Dasher Mentor Program w/ Upperclasswomen

**SOPHOMORE
YEAR**

- Student Leadership Training

**JUNIOR
YEAR**

- Student Leadership Training

Families are encouraged to use the summers before junior and senior year to visit colleges of interest.

**SENIOR
YEAR**

- Summer College Application Workshop

SERVICES PROVIDE STUDENTS & FAMILIES?

Support by Grade Level

Fall Semester	Spring Semester
<ul style="list-style-type: none"> ◦ Freshman Orientation + Fun Day ◦ Dasher Mentor Program w/ Upperclasswomen ◦ One-on-One Counselor Meetings ◦ Freshman/Sophomore Risk Behavior Night ◦ Intro to Naviance ◦ Freshman Wellness Programming 	<ul style="list-style-type: none"> ◦ Course Selection Presentation + One-on-One Counselor Meetings for Upcoming Year ◦ PreACT Exam
<ul style="list-style-type: none"> ◦ Freshman/Sophomore Risk Behavior Night ◦ Introduction to Sophomore-Senior Applied Wellness Program 	<ul style="list-style-type: none"> ◦ Course Selection Presentation + One-on-One Counselor Meetings for Upcoming Year ◦ Sophomore Success Night ◦ One-on-One College and Career Exploration Counselor Meetings ◦ Carla Olle Career Day ◦ PreACT Exam
<ul style="list-style-type: none"> ◦ Dasher Mentor Program w/ Freshmen ◦ PSAT Exam—National Merit Scholar Qualifying Exam ◦ Junior Interview Day 	<ul style="list-style-type: none"> ◦ Course Selection Presentation + One-on-One Counselor Meetings for Upcoming Year ◦ College Financial Aid Night ◦ One-on-One Junior College Meetings ◦ Carla Olle Career Day ◦ ACT Exam ◦ Junior College Night
<ul style="list-style-type: none"> ◦ Dasher Mentor Program w/ Freshmen ◦ Senior College Admissions Process Begins: <ul style="list-style-type: none"> ▶ Senior College Night ▶ College Application Submissions ▶ Interactive College Admissions Presentation ▶ On-Campus College Rep Visits + Catholic College Fair ▶ College Application Working Meetings ▶ One-on-One College Meetings ▶ Financial Aid Night ▶ Support for First Generation College Students 	<div data-bbox="768 1696 1395 1810" style="background-color: #800080; color: white; padding: 5px; margin-bottom: 10px;"> <p><i>See pg. 15 for more on individualized college counseling!</i></p> </div> <ul style="list-style-type: none"> ◦ College Scholarship Submissions Begin ◦ College Decision Day

APPLIED WELLNESS

Wellness for the real world.

This unique-to-DSHA program is designed to mimic how individuals achieve whole-person wellness beyond high school: through reflection, contemplation, planning, and action. We will provide you with the framework and a variety of opportunities to practice and internalize this process so that wellness becomes more than a requirement—it becomes a way of life.



◀ A four-year, school-wide commitment will allow students to grow into the ability to manage their own wellness—during the high school years and beyond.

How does it work?

Freshman Year:

First semester, you will take Freshman Wellness and Freshman Foundational Fitness. You will have Foundational Fitness three times per week, and on the fourth day, Freshman Wellness is designed to help you navigate your DSHA experience—all with a focus on individual and community wellness. Second semester, you will have additional opportunities for guided Applied Wellness experiences. Learn more on page 38!

Sophomore-Senior Year:

You will choose from a number of hands-on wellness experiences to help you gain a better understanding of the resources and experiences that align with your needs. They will be customized, individualized, and dynamic to meet your changing needs.

Learn more at dsha.info/wellness.

Diversity, Equity, & Inclusion

DSHA's commitment to diversity, equity, and inclusion is rooted in our Catholic identity and Salvatorian mission. Loving one another means putting into practice Catholic Social Teaching, and our scriptural call to "do justice, love goodness, and humbly walk with God" (Micah 6:8) are foundational to our Catholic faith and integral to the formation of all Christians. We also believe that all people are made in the image and likeness of God.

How does DSHA define DEI?



Diversity

This refers to the myriad of personal experiences, values, perspectives, talents, and worldviews that arise from differences in culture and circumstance. DSHA values diversity among the students we recruit and the staff we hire. DSHA promotes and supports diversity through a range of curricular and co-curricular offerings, as well as through programmatic pastoral and experiential learning. We support and develop young women, who rooted in their own faith tradition, are able to embrace and respect differences in background and perspective, while being open to appreciating and learning about the wider world.



Equity

Each student will receive the support she needs to have access to everything DSHA has to offer her spiritual, social, emotional, and academic formation. When these needs are met, it will lead students to have a strong sense of belonging, and to become capable and confident young women of faith, heart and intellect who accept the gospel call to live lives that will make a difference.



Inclusion

As a Catholic community, we are called to embrace the dignity and talents of each individual in our school community as well as in our society at large. We strive to build an inclusive campus for our students, the families that support them, and our community of colleagues where each individual experiences an authentic sense of belonging in a loving, caring, and supportive community. We strive to actively live our call to love God and one another in all we do, and in the experiences of our community members, always reminded that we are rooted in our Catholic faith and its call to social justice.

What does DEI support look like at DSHA?

- **Academics** | Success, Opportunity, and Growth
- **Unity** | Actively Building Bridges
- **Respect for All** | Appreciation + Celebration of Community
- **A Place to Belong** | Welcoming Environment for Students + Families

Sampling of Student DEI Opportunities

- **Co-Curriculars**
 - Student Diversity Council
 - Furia Latina
 - Sisters of Culture
 - Best Buddies
- **Monthly Dasher Dialogues**
- **Multi-Cultural Week**
- **Special Liturgies**
 - Black History Month Prayer Service
 - Our Lady of Guadalupe Mass
- **Marian Scholar Program**
 - Marian Scholar Students
 - Peer Mentors

CO-CURRICULAR

Involvement

Explore your passions!

Co-curriculars are an integral part of the DSHA experience, with opportunities built into the school day and beyond. Why is this such an important part of your high school experience? Research has shown that involvement in these activities will help you and your classmates with the following:



- 1** Positive benefits to your academic record.
- 2** A greater sense of belonging to the school community.
- 3** Practice personal and professional leadership development while gaining confidence in a safe space.
- 4** Healthier, more balanced behaviors.
- 5** Positive results in college and beyond.
- 6** Enhanced development in life skills.

What is a co-curricular at DSHA?

- 1 A co-curricular is a group that complements and extends what students are learning and experiencing in:
 - Academic departments
 - Close connection to our mission as a Catholic school
- 2 Co-curriculars are designed to strengthen classroom learning and mission focus.
- 3 Co-curriculars offer students a space to create, plan, implement, and lead various school-wide activities, opportunities, and events.
- 4 Most co-curriculars are offered during the school day—they help build community through shared interests and across grade levels.
- 5 There is a co-curricular for everyone to explore their passions or try something new!



2023-24 Co-Curricular Offerings at DSHA

Academic-focused offerings:

- Art Studio
- Athletic Performance Training
- Film Study
- Forensics | *after school*
- French Club
- HOSA | Health Occupations Students of America
- Latin Convention
- Math Club
- Model U.N.
- Reading Club
- Robotics | *after school with MUHS*
- School Ecology/Garden
- SMART Team | *Students Modeling a Research Topic*
- The Word Student Publication
- Yearbook

Mission-focused offerings:

- Retreat Planning Teams
- Mass Planning
- Service Teams | some examples include:
 - Collections Team
 - Goodness & Kindness Team
 - Hometown Heroes
 - Interfaith Team
 - Raise Awareness
 - She's the First
 - Special Weeks
 - Student Auction
- Asian Student Union
- Best Buddies
- Equality, Voice, Empowerment
- Furia Latina
- Mental Health Matters
- Respect Life
- Sisters of Culture
- Student Athletics Advisory Council
- Student Council Commissions:
 - Communications
 - Student Diversity + Inclusion
 - Policies & Practices
 - School Spirit & Pride
 - Student Wellbeing
 - Special Events
 - Student Ambassadors
- Student Recruiters

DASHER ATHLETICS

What does it mean to be a Dasher athlete?

At DSHA, you will join a long-standing tradition of athletic excellence. You will also join a culture that creates space for each and every student athlete. Across all fifteen sports, coaches and staff intentionally develop and encourage student-athletes in the areas of:

Academic Success

Athletic Excellence

Team Work

Service to Others

Leadership

Sportsmanship



- * **40**
Wisconsin State Championships
- * **10**
National Championships
- * **64%**
of DSHA students participate in Dasher athletics
- * **9**
Dashers from the class of 2023 are attending college on an athletic scholarship

DSHA Athletic Offerings:

DSHA is one of only **18** schools in the country whose coaches have earned NFHS Level 3 Honor Roll status for their leadership and commitment to professional development.

15 different sport offerings is the most for girls in the state of WI!

- Basketball | Varsity, JV, JV2, Freshman
- * Cross Country | Varsity, JV
- * Field Hockey | Varsity, Varsity Reserve, JV, JV2
- Golf | Varsity, JV
- * Gymnastics | Co-op WIAA Varsity, JV
- * Ice Hockey | Co-op WIAA Varsity, JV
- Lacrosse | Varsity, JV
- * Rugby | Club - A side, B side
- * Skiing | Varsity, JV
- Soccer | Varsity, JV, Freshman
- Softball | Varsity, JV, Freshman
- * Swimming & Diving | Varsity, JV
- Tennis | Varsity, JV
- * Track & Field | Varsity, JV
- Volleyball | Varsity, JV, JV2, Freshman

**Denotes non-cut sport.*

Fitness & Performance

- DSHA offers year-round strength and conditioning coaching to benefit all athletes of all grade levels.
- The program is specifically designed for girls to improve overall fitness and enhance athletic performance.
- Areas of focus: vertical jump, speed, agility, quickness, and overall fitness level.



Learn more at dsha.info/athletics.

FINE ARTS at DSHA

A place to explore, create, and shine!

Develop confidence, talents, freedom of expression, and creativity through fine arts. Whether you try a painting class to explore a new creative outlet, or have your sights set on Broadway, DSHA has a fine arts opportunity for every interest and ability level.

Theatre: Shine on stage—or behind the scenes!

- Annual Musical | *all students eligible for audition*
- Annual Stage Play | *all students eligible for audition*
- Community Theatre Works | *summer musical—all students eligible to participate*
- Academic acting classes
- Academic theatre production and stage craft classes
- MUHS Productions | *Opportunity to audition for theatrical shows at Marquette University High School.*

Music: Vocal & Instrumental

Choir Opportunities

- Concert Choir | *introductory*
- Camerata Singers | *advanced singers*
- Angelaire* | *select vocal performance ensemble*

Campus Ministry Music Team

- Sing or play an instrument at school liturgies or other special events

Instrumental Opportunities

- Handbells | *beginner and advanced*
- Orchestra | *open to all with at least one year of experience*
- Divine Strings* | *large and small ensemble performance opportunities*

**Audition required for membership.*

Visual Arts: Discover your inner creator!

Introductory Offerings

- Design, discovery, and self-expression.

Skill-Building Offerings

- From ceramics and graphic design, to fibers, jewelry, painting, and more.

Mastery Offerings

- Create a body of work in your medium of choice.



DSHA Theatre **Recent Productions**

Musical Theatre

- 2023 ▶ *Joseph and the Amazing Technicolor Dreamcoat*
▶ *Disney's Descendants*
- 2022 ▶ *Sister Act*
▶ *Matilda the Musical*
- 2021 ▶ *Disney's Freaky Friday*
▶ *Godspell*
- 2019 ▶ *Disney's Beauty & the Beast*
▶ *Disney's Newsies*
- 2018 ▶ *Les Misérables School Edition*
▶ *Willy Wonka & the Chocolate Factory*

Stage Plays

- 2023 ▶ *Trap*
- 2022 ▶ *Puffs*
- 2020 ▶ *It's a Wonderful Life: A Live Radio Play*
▶ *Get Smart*
- 2019 ▶ *Almost Maine*
▶ *Edgar Allen Poe's Murder Mystery Dinner Party*
- 2018 ▶ *Stage Door*
▶ *Thriller of the Year*



The DSHA

MARIAN SCHOLARS

Wisconsin's first and only high school recognized by the **National Catholic Board on Full Inclusion.**

Program

The Marian Scholars Program at DSHA is a student-centered, inclusive education program for students with intellectual and developmental disabilities.

The Marian Scholars Program

- Rooted in a spirit of inclusivity and inspired by Blessed Mary of the Apostles, founder of the Sisters of the Divine Savior—whose mission is to make known the goodness and kindness of Jesus Christ.
- Supports the belief that all students deserve opportunities to maximize their academic, social, and spiritual potential, building upon our mission to educate young women in a Christ-centered community that values diversity.
- Provides opportunities for students to participate in all aspects of the DSHA community, from taking a variety of classes in the general education setting to participating in Mass, co-curriculars, theatre, and more!
- Relies on a collaborative peer mentoring component with DSHA students to help engage Marian Scholars in class and throughout other parts of their day.



Did you know? DSHA has over 70 students serving as peer mentors with Marian Scholars.

Program Curriculum

Each Marian Scholar's schedule is carefully designed with input from parents/guardians, teachers, and the girls themselves. Every girl in the Marian Scholars Program has a schedule that includes a mixture of general education academic and elective classes, as well as the opportunity for special education classes in reading, writing, and math that are specifically designed for students in the program.

Marian Scholar | Sample Freshman Schedule:

1st Period	Reading/Writing Resource*
2nd Period	Math Resource*
3rd Period	College Prep English I*
4th Period	Foundational Fitness + Freshman Wellness Seminar
5th Period	Cultures and Civilizations
6th Period	The Bible: The Living Word of God
7th Period	Art Foundations
8th Period	French I or Spanish I

**Classes designed and taught specifically for students in the Marian Scholars Program.*

Transition into Post-High School

- During junior and senior years at DSHA, Marian Scholars and their families will work closely with teachers and counselors to explore post-high school options.
- The Marian Scholars Program will culminate in students achieving a certificate of completion, along with participation in the DSHA baccalaureate and commencement ceremonies with their classmates.

Visit dsha.info/marianscholars to learn more about Marian Scholars Program admissions.

The transition to **HIGH SCHOOL**

Moving from middle school to high school can feel overwhelming. At DSHA, current students, teachers, and staff are here to make sure you feel at home and welcome right away—even before your first day!



Social Transition

A DSHA experience means a place to belong and friends for a lifetime. Here's how it starts:

Spring Semester of 8th Grade Year

- Incoming Freshman Visit Day
- Incoming Dasher Kick-Off—with parents
- Incoming Freshman Lock-In
- Incoming Freshman Fun Night with MUHS

Summer Before Freshman Year

- Ice Cream Social—for students + parent meet and greet
- Dasher Mentors—with upperclasswomen
- Summer Cool ▶ Camp Dasher
 - ▶ Leadership Boot Camp
 - ▶ Athletic Camps
 - ▶ Community Theatre Works
 - ▶ Girls + Robotics

Fall of Freshman Year

- Dasher Dens
- Dasher Mentors + Picnic
- Freshman Orientation + Fun Day
- Set Sail Freshman Retreat
- Freshman Service Day
- Dash-a-Thon

◀ **Students participate in the annual Dash-a-Thon—a favorite event!**

Transition to the College-Prep Environment

Freshman Wellness* | *first semester freshman year*

This interactive classroom experience takes place once each week during the extended instruction time, and is designed to help you transition from middle school into the DSHA college-prep environment. Freshman Wellness connects students with the people, resources, and opportunities at DSHA which are here to help each student make the most of their freshman year and beyond. In Freshman Wellness, groups of students will work with school counselors, teachers, campus ministers, administrators, and members of the Applied Wellness program to participate in thoughtful discussions, work together on activities, build relationships, and learn more about themselves and DSHA.

Throughout the semester, you will learn and practice the following:

- Creating and committing to a solid academic routine, including:
 - ▶ Time management
 - ▶ Organization
 - ▶ Study skills
 - ▶ And more!
- Exploring the dimensions of wellness through self-assessment, reflection, goal setting, and application.
- Finding the resources that work best for you.
- Developing a growth mindset:
 - ▶ Embracing meeting new people
 - ▶ Learning new things
- Learning about the policies, processes, and other guidelines at DSHA.

**This course takes place in conjunction with Freshman Foundational Fitness.*

Freshman Resource | *first semester freshman year*

All freshmen take a guided study hall when beginning at DSHA. This will help you learn to create balance, meet the academic rigor of DSHA, and allow for designated opportunities to access the following:

- ALPHA (Academic Learning Place For Higher Achievement) for individualized help with a teacher in math, science, or English.
- Individualized time with a teacher or counselor.
- Quiet study time in a classroom.



Tuition Assistance, SCHOLARSHIPS, & FINANCIAL AID

DSHA is committed to offering need-based and merit-based scholarships, as well as other forms of tuition assistance and financial aid in order to:

- Provide an outstanding college-preparatory, Catholic education to qualified students regardless of a family's financial circumstances.
- Enroll the strongest student body possible—including a financial and mission-based commitment to a diverse group of young women with different gifts, perspectives, and life experiences.

Scholarship Stories



Scan or visit dsha.info/scholarships to hear directly from students about their all-girls, Catholic, college-prep experience, and the scholarships that make DSHA possible.

Tuition Assistance & Financial Aid FAQs

Who should apply for financial aid? Will our family qualify?

When in doubt, apply! Every aid-based tuition assistance award is determined upon careful evaluation of each family's financial situation. Factors that can impact an award include: income, total number of children/dependents, tuition paid at other schools, and additional life expenses and circumstances unique to that family.

How do I apply for financial aid?

Families interested in need-based financial aid must complete a financial aid application through Blackbaud Financial Aid Management, DSHA's financial aid management software provider. Visit dsha.info/tuitionsupport for more information.

When do I apply for financial aid?

Incoming freshman families must apply for financial aid in the fall during the admissions application period. The online application is available early September–November 3, 2023. Applications must be complete by the November 3 deadline to be eligible for need-based financial assistance. Awards will be sent with admissions decisions in January 2024.

Are financial aid awards renewable?

Yes! The financial aid award given at the time of acceptance will be renewed each year, given the family's financial circumstances remain the same. Families that are interested in receiving financial aid must re-apply each year.

Is financial aid available for things outside of tuition?

Yes! DSHA has resources available to help families who qualify with the costs associated with the following items:

ACT fee · AP exam fee · books · college application fees · college bus trip · dance tickets · bus tickets · select co-curricular activities · dresses for formal dances · graduation dresses and white gloves · overnight trips including Campus Ministry retreats and world language study trips · uniforms

Does DSHA have other forms of tuition assistance beyond financial aid?

Yes! Turn the page to learn more about:

- The Milwaukee Parental Choice Program
- Merit-Based Scholarships
- Catholic School Personnel Grant
- Other forms of tuition assistance

Questions about scholarships and financial aid? Contact Director of Admissions & Financial Aid Ann Duffy, DSHA '10 at DuffyA@dsha.info or 414.616.2805.

Learn more at dsha.info/tuitionsupport.

SCHOLARSHIPS, FINANCIAL AID, & TUITION ASSISTANCE (cont.)

DSHA gave **over \$1 Million** in financial aid during the 2023-24 school year.

30% of the student body receives financial aid awards from DSHA fund-raised dollars.

95% of families who apply for financial aid receive some form of tuition assistance.

Range of Financial Aid Awards

16%	50%	17%	17%
\$1,000	\$3,000	\$7,000	\$10,000+
-	-	-	
\$2,999	\$6,999	\$10,000	

\$6,129 average need-based award in 2023-24

In addition to the over \$1 million in financial aid awards, the following are other opportunities for tuition assistance:

Milwaukee Parental Choice Program

The Milwaukee Parental Choice Program (MPCP) provides renewable vouchers for tuition, fees, and textbooks for families who live in the City of Milwaukee and meet the program's income criteria.

- DSHA participates in the February open application period.
- Applications for the February open application period (2024-25 school year) are available February 1, 2024 and due by February 20, 2024.
- Incoming families interested in the MPCP should also complete a financial aid application in November.

Catholic School Personnel Grant

In appreciation of and to help provide a Catholic education for the children of Catholic school employees, DSHA offers a Catholic School Personnel Grant.

- This grant offers a tuition reduction of up to \$1,500 per daughter and is renewable upon application each year.
- To be eligible, one must be employed by a Catholic elementary or secondary school in the Archdiocese of Milwaukee at the time the application is submitted.

Other helpful ways to assist with DSHA tuition:

10 Month Payment Plan | 10 payments may be made over the course of a period between July (before school starts) and April to assist families as needed.

Tuition Tax Credit | Wisconsin parents/guardians are eligible for a maximum deduction of \$10,000/child in grades 9-12 for eligible payments made during the calendar year. We suggest you contact your tax professional to see how this credit impacts you.

529 Plan | Families may use 529 plans to pay up to \$10,000 in tuition expenses at private K-12 schools.

Merit Scholarship Opportunities | Freshman Year

A number of merit-based scholarships are given for exceptional academic achievement at the time of acceptance. Admitted students will also have the opportunity to apply for criteria-based scholarships following acceptance.

Beacon Scholarship | full-tuition, renewable

Awarded to at least one young woman of color in the Milwaukee-area. Criteria: entrance exam score, recommendation from middle school, demonstrated strong commitment by the students and parents, a strong record of achievement in middle school, and demonstrated financial need.

Application: Due Friday, Nov. 3.

Centennial Scholarship | \$3,000, renewable

This award is for the student (or students) with the highest DSHA entrance exam score.*

Application: No application required.

*Additional academic scholarships may be awarded based on high entrance exam scores.

Horizon Caddie Scholarship | 90% of tuition, renewable

Awarded to one incoming freshman who has demonstrated financial need and resides in the Greater Milwaukee area. Criteria: entrance exam score above the 90th percentile, recommendation from middle school, a demonstrated strong commitment by the students and parents, and a strong record of achievement in middle school.

Application: Available in January after acceptance.

Leadership & Service Scholarship | \$500 - \$1,000, one-time award

These awards are based on outstanding leadership in school, parish, or community and/or demonstrated accomplishment in volunteering and service to the community, above and beyond their school service requirement.

Application: Available in January after acceptance.

Merit Scholarship Opportunities | Sophomore - Senior Years

A number of merit-based scholarships are available for students following freshman year. These awards are a mix of application-based and faculty-nominated scholarships.

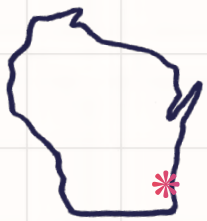
Scholarship Name	Recognition of	Grade Levels Eligible* for Application/Nomination
Alumnae Service	student efforts in service to others	gr. 10 + 11 student application
Beatrice M. Haggerty	achievement in math & science, leadership, co-curriculars, service	gr. 10 + 11 faculty/staff recommendation
Dr. Angela T. Pienkos	excels in social studies	gr. 11 student application
Edna Jensen Fine Arts	talent & promise in an area of fine arts	gr. 10 + 11 fine arts faculty recommendation
Public Policy	demonstrated passion for public policy	gr. 10 + 11 student application
Sarah M. Hegarty Memorial	leadership, goal oriented, strong character, friendly, grade point, co-curriculars	gr. 11 faculty/staff recommendation
Woman of Character	proactive and dynamic student, enthusiastic learner, courageous achiever, community builder	gr. 9 + 10 + 11 faculty/staff recommendation

*Scholarship is awarded during the year of application eligibility, and will count toward the following school year. E.g., a scholarship awarded during grade 10 will count toward tuition during grade 11.

LOCATION & TRANSPORTATION

Info + FAQs

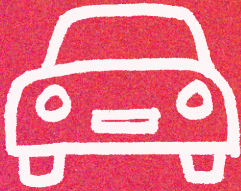
Drawing students from all over the greater Milwaukee area allows Dashers to meet classmates who share similar interests and talents, while offering students the opportunity to engage with friends they might not otherwise meet, and to develop as young women who embrace and respect differences in background and perspective. Our commitment to whole-person education includes widening each young woman's outlook on her community, city, and the world. This experience, unique at the high school level, is similar to what our young women will find in college.



Where is DSHA located?

Located in Milwaukee, near Wauwatosa and Brookfield, DSHA annually draws students from over 125 middle schools across 60 zip codes throughout the metropolitan area.





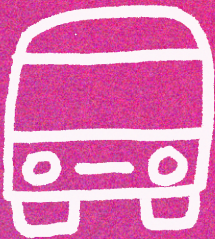
How will I find a carpool?

Parents need them and girls LOVE them! Most students carpool at some point throughout the year. Upon enrollment, you will be added to the online directory with the ability to search for a carpool with other DSHA families of all grade levels.



When is school open in the morning? And when does it close?

Whether studying in the commons, working out in the fitness center, studying in the library, or sticking around for a sports practice or music rehearsal, our doors are open for your daughter both before and after school. Students have access to the building as early as 6:00 a.m. And after school, your daughter will have a safe space to be productive until her ride arrives into the evening.



Are there bussing options?

Bussing is available to students from the Milwaukee Southside in partnership with the United Community Center.



LEARN MORE

about the DSHA All-Girls difference

Dasher Stories | Highlights, Happenings, and Achievements

The Word Magazine is published each semester to capture the stories of Dashers and the DSHA community. Visit dsha.info/word to view full issues.



Fall Semester 2022 features include:

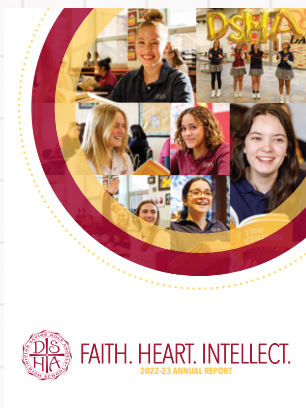
- Faith | Choosing Faith
- Heart | Civil Discourse
- Intellect | STEM Scholars
- And more!



Spring Semester 2023 features include:

- Faith | Retreats at DSHA
- Heart | Civil Rights Pilgrimage
- Intellect | AP Classes and the DSHA Difference
- Class of 2023 College Matriculation
- And more!

The DSHA Annual Report is published each year to celebrate Dasher achievements and pay gratitude to donors. Visit dsha.info/annual to view full issues.



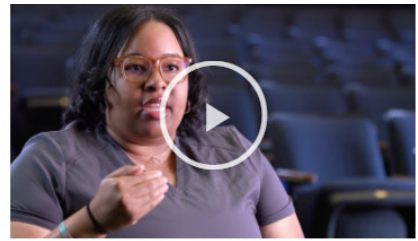
2022-2023 Academic Year | features include:

- DSHA Class of 2023 Valedictorian Address | by **Kate Hemsworth, DSHA '23**
- Vocare Service Reflections | by **Bryanna Assigley, DSHA '23; Sofia Grbic, DSHA '23; and Ava Melvin, DSHA '23**
- Dasher Welcome to Incoming Freshmen | by **Julia Rentmeester, DSHA '23**
- Faith, Heart, and Intellect | **DSHA Student Impact by the Numbers**
- And more!

My Dream Started at DSHA | Stories and experiences from students, alumnae, teachers, and more!



So many of life's dreams begin in high school. Scan or visit MyDreamStartedAtDSHA.com to see what members of the school community have to say about their dreams and experiences at DSHA.



Create your own Dasher story this summer!



Summer Cool at DSHA

Each summer, DSHA runs over 100 camps and classes created and designed for girls in rising grades 1-9. Summer of 2024 camp information will be available in February 2024. To learn more visit dsha.info/summer.

Camp categories include:

- | | | |
|------------|--------------|-------------|
| Athletics | Reading | Visual Arts |
| Faith | STEM | Wellness |
| Leadership | Study Skills | Writing |
| Music | Theatre | |

Visit dsha.info for up-to-date information on all things DSHA—from curriculum and Campus Ministry offerings, to special events, athletics, and fine arts happenings!

Follow us on social media:







Class of 2028

APPLY TODAY!

Submit your application — it's as easy as 1, 2, 3!



Grab your parents, scan the code or visit dsha.info/apply, and start the application using the myDSHA Admissions Checklist. The full application includes:



- Parent application
- Student essay
- Teacher recommendation forms
- Registration for the entrance exam
- Financial aid application (optional)

Helpful hint: You do not need to complete the full application in one sitting! You can start, take a break, and then return to the process at any point before Nov. 3.

Application & Financial Aid Deadline:

Friday, November 3



Take the entrance exam! DSHA will administer the exam on:

- **Friday, November 3**
- **Saturday, November 4**

Don't forget! You must register for the entrance exam in your myDSHA admissions checklist!



Wait patiently!

- The DSHA Admissions Committee will carefully review your full set of application materials.
- Admissions decisions and financial aid awards will be sent to families by the first week of January.
- Merit-based scholarships are either awarded upon acceptance, or available for application following acceptance.

Divine Savior Holy Angels High School does not discriminate on the basis of race, color, national and ethnic origin in administration of its educational policies, scholarship and loan programs, and athletic and other school-administered programs.

VISIT & DISCOVER DSHA

2023-2024 School Year



Scan or visit
dsha.info/visit
to learn more about
opportunities to
visit DSHA.

Save the date! **OPEN HOUSE**

5th-8th Grade | Oct. 22, 2023



Learn more at
dsha.info/openhouse.

Would you like to receive
up-to-date mailings and emails
from DSHA?



Scan or visit
dsha.info/inquiry
to be added to our
mailing list.



Divine Savior Holy Angels High School

SPONSORED BY THE SISTERS OF THE DIVINE SAVIOR

4257 North 100th Street | Milwaukee, WI 53222

All Girls Makes All the Difference | dsha.info



Non Profit Org.
U.S. Postage
PAID
Permit 2221
Milwaukee, WI



Visit & discover DSHA!

dsha.info/visit



Divine Savior Holy Angels High School OPEN HOUSE

Sunday,
October 22,
2023

*For families with girls in
grades 5-8.*

Learn more at dsha.info/openhouse.